

Pillars for Distribution & EV Charging



Charles Endirect

Feeder Pillar Shells
Pre-wired Distribution Cabinets
Distribution for EV Charging

Content

	Page
Company overview	3
Standard pillars: overview	4
Specialist pillars: overview	4
MINI pillars: SMP, FMP, RMP	5
MIDI pillars: BDP	6
MAXI pillars: CFP	7
MEGA pillars: DFP	8
Market Trader pillars: Barbican, Smithfield	9
GRP pillars:	10
Bespoke pillars	11
ENDURE stainless steel distribution equipment	12
Locks and security options	13
Accessories and optional extras	14
Pre-wired Distribution pillars	15
· Example schematic	16
· Example technical document pack	17
Distribution for EV Charging	18
Size chart for CEL Standard feeder pillars	20

Charles Endirect **Distribution** Products



Please note the images in this document are for illustration purposes only, they are not to scale, and colour may vary.

Company overview

Charles Endirect Limited (CEL) is a family-owned organisation and a leading designer and manufacturer of electrical components and equipment, for use in the streetlighting, highway, EV supply and construction industries. CEL have been delivering products to UK and international markets since 1984 and is a founder member of the Highway Electrical Manufacturers and Suppliers Association, an active member of the Highway Electrical Association and a Premier Member and supporter of the Institution of Lighting Professionals.

The company is an ISO9001: 2015, ISO14001:2015 and ISO45001:2008 quality certified organisation with all areas of the company operating stringent quality control systems. Products are designed and manufactured to meet, or exceed, all relevant legislation.

Products

Charles Endirect's industry experience and expertise enable the company to design and manufacture, some of the most innovative, high specification and robust products available in the market.

This includes one of the most comprehensive ranges of feeder pillars in the UK, starting from the slimline and compact Mini pillar range to the new Mega pillars, designed to meet customer demand for ever larger cabinets. If models in the standard range are not suitable for your needs, a bespoke metalwork design and build service is available.

Pillars can be pre-wired to your specification and tested before they leave the factory, this keeps installation time on-site to a minimum. Charles Endirect Ltd work with you from the initial enquiry through to design, testing, certification, and dispatch, to ensure everything runs smoothly.

Service

As a family-owned organisation, we know how important good customer service is. To ensure we can provide you with the level of support and service you need, when you need it, we endeavour to retain high levels of stock for our standard ranges to enable us to dispatch in one to two working days and offer a next working day service if time is of the essence.

To request a quotation or for more information about our products and services, please contact our Customer Services Team or speak to your CEL Area Sales Manager.



sales@charlesendirect.com



+44 (0)1963 828 400



www.charlesendirect.com

We also offer *in-ground distribution solutions* with our *SIGMA* and *GIFAS* products. Contact us for details.



Standard pillars

Key Features and Benefits

- P Constructed from either HR4 3mm or 5mm thick mild steel or 3CR12 stainless-steel; robust, and durable for long term use.
- P Hot dipped galvanised to BS EN ISO 1461 standard; protects against rust and corrosion; extends life of product.
- P Detachable painted root (excluding Mini range); gives long lasting protection and ease of installation.
- P Pillars are fitted internally with either 12mm or 18mm external grade, fully treated plywood backboard; strong, stable and knot free.
- P 6mm brass earth stud on pillar and door with 500mm earth strap; protects individuals and equipment.
- P Ground level clearly marked for safety and ease of installation.
- P Pillars are supplied with hazard warning labels to BS EN ISO 7010 standard: saves time and cost for installer.
- P Doors seals designed to IP55; protects against dust and water spray.
- P Tri-head, CLL Anti-vandal locks or multipoint locking systems ensures security and protects against tampering.
- P Cast stainless-steel block hinges; strong and resist rust and corrosion.
- P Pre-fitted lifting eyes where needed for ease of transport and installation.
- P Integral door stays on larger pillars; lock doors at 90° for safety.
- P Recessed or flush doors for security and protection.

Options available

- Ø Powder coating to RAL or BS colours, anti-graffiti, G2A and Heritage style.
- Ø Painted root where not as standard.
- Ø Louvre panels to doors or side panels dependant on model.
- Ø Construction in 304 or 316 grade stainless-steel.
- Ø Hasp and staple available for added protection.
- Ø Various lock types.
- Ø Cable exit trays.

Specialist pillars

Heritage style paint finish

Any pillar from the BDP, CFP and market trader ranges can be finished in Heritage Style, adding elegance and character to your lighting scheme.

Pillars are painted black with gold filigree as standard, but other options such as green and gold are available.

Stainless-steel shells

With a design life of some 50 years, stainless-steel pillars offer ultimate durability and long service. They are ideal for use in marine environments such as ports and seaside towns where extra protection against the elements is needed. They also offer a more stylish and modern design for city centre locations. Products can have a brushed or polished finish.

If you want something out of the ordinary, we offer a design and build service for bespoke stainless-steel pillars including grade 316.

Market Trader pillars

Our Smithfield and Barbican pillars provide temporary supply options for outdoor markets and outdoor event areas. They are easy to install and have separately locking top and bottom doors, for supplier and user connections. Both are available in a range of paint finishes.

GRP pillars

With a design life of 30 years, the GRP pillars offer a low maintenance, flexible solution and have an excellent size to weight ratio.

Pre-wired Distribution Pillars and Distribution Pillars for EV Charging

Our dedicated in-house design team consists of fully qualified and experienced electrical and mechanical engineers; this means we can offer an unparalleled service, both in terms of the design, and the technical submission.

Our pillars are built, assembled, and tested at our factory in Wincanton, Somerset, enabling us to have full quality control through the entire process, this means you receive a pillar that is fully tested and ready for installation on site.

We also offer a design and build service for bespoke pillars in galvanised or stainless-steel, including grade 316, so you can have the design you want, to meet the needs of your specific project.

Ingenuity at work

MINI range: SMP, FMP, RMP

Single door pillars with a fixed root in 3mm galvanised steel

- P A choice of designs offering different solutions allowing you to choose the right option for your project.
- P Pillars are designed to be slimline and compact, perfect for where space is limited or for simple distribution needs.
- P Hot dipped galvanised shell to BS EN ISO 1461 standard; protects against rust and corrosion; extends life of product.
- P Pillars are fitted internally with long lasting 12mm external grade backboard; strong, stable and knot free.
- P 6mm brass earth stud on pillar and door with 500mm earth strap; protects individuals and equipment.
- P Ground level is clearly marked for ease of installation.
- P Pillars are supplied with hazard warning labels to BS EN ISO 7010 standard: saves time and cost for installer.
- P Doors seals designed to IP55; protects against dust and water spray.
- P Tri-head secure locks for security and protection.

SMP Standard door, simple design model

- Simple, entry level pillar with a flat fitting door for good ingress protection.

FMP Folded door, maximum internal access

- This mid range unit has been designed with a fold around door to enable maximum access to the internal working area.

RMP Recessed door, increased security features

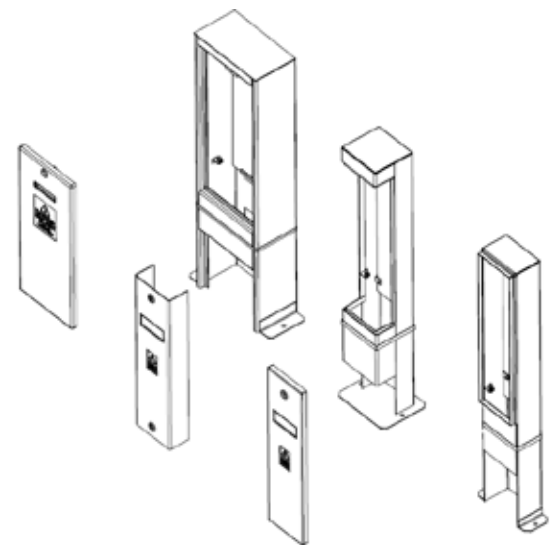
- Recessed door for improved anti-vandal and anti-tamper properties.
- Integral handle for easy opening.
- Fitted with 8mm screw thread lock for added security.
- Black painted root.

MINI pillar options

- Powder coated finish available to RAL or BS colours, anti-graffiti and G2A specification for highway works.
- Construction in stainless-steel casing - 3mm grade 304.
- Louvres in door: one top, one bottom, for ventilation.
- SMP, FMP models: root can be painted for added protection.
- Security Hex lock instead of tri-head locks.



RMP, FMP and SMP comparison



Range: sizes in mm	Model ref	Doors	Root	H	W	D	Root H	Back-board H	Back-board W	Back-board D	Working depth	Door aperture H	Door aperture W	Weight approx Kg	Shell thickness
MINI	SMP30	1	Fixed	700	160	150	300	600	150	12	130	580	142	16	3
MINI	SMP40	1	Fixed	700	210	150	300	600	200	12	130	580	192	18	3
MINI	SMP40/S	1	Fixed	700	210	150	300	600	200	12	130	580	192	18	3
MINI	SMP60	1	Fixed	950	360	150	300	800	350	12	130	780	342	34	3
MINI	FMP15	1	Fixed	460	300	150	150	290	285	12	130	280	285	16	3
MINI	FMP30	1	Fixed	700	160	125	300	600	145	12	130	570	150	17	3
MINI	RMP30	1	Fixed	680	285	160	320	550	235	12	118	550	222	28	3
MINI	RMP40	1	Fixed	673	400	225	360	545	335	12	183	545	335	40	3

*S= stainless-steel

MIDI range: BDP

Single door pillars in 3mm galvanised steel

- P Hot dipped galvanised to BS EN ISO 1461 standard; protects against rust and corrosion; extends life of product.
- P Detachable painted root; gives long lasting protection and ease of installation.
- P Pillars are fitted internally with either 12mm external grade, fully treated plywood backboard; strong, stable and knot free.
- P 6mm brass earth stud on pillar and door with 500mm earth strap; protects individuals and equipment.
- P Ground level clearly marked for safety and ease of installation.
- P Pillars are supplied with hazard warning labels to BS EN ISO 7010 standard: saves time and cost for installer.
- P Doors seals designed to IP55; protects against dust and water spray.
- P Tri-head secure locks for security and protection.
- P Cast stainless-steel block hinges offer strength and rigidity.
- P Accepts CEL **ENDURE** stainless-steel distribution boards.
- P Recessed door provides improved anti-vandal properties.
- P Larger pillars fitted with lifting eyes.

BDP/FP2 features higher security

- Hasp and staple and CLL anti-vandal locks.
- Louvres fitted on both sides for ventilation.

BDP03 features increased security and comes ready painted

- Hasp and staple and CLL anti-vandal locks.
- Enclosed root section with removable front plate for easy access.
- Powder coated in green as standard.
- Document holder.

MIDI pillar options

- Powder coated finish to RAL or BS colours, Heritage style, anti-graffiti and G2A specification for highway works.
- Construction in stainless-steel casing - 3mm grade 304.
- CLL anti-vandal locks instead of Tri head locks.
- Hasp & staple and Yale lock for added security.
- Louvres in door: one top, one bottom, for ventilation.
- Cable exit trays and Document holder (excluding BDP50)
- Document holder (standard with BDP03).



BDP MIDI pillars



BDP/FP2



BDP03



Heritage style finish

Range: sizes in mm	Model ref	Doors	Root	H	W	D	Root H	Back-board H	Back-board W	Back-board D	Working depth	Door aperture H	Door aperture W	Weight approx Kg	Shell thickness
MIDI	BDP/FP2	1	Detachable	710	450	250	300	590	430	12	230	490	345	44	3
MIDI	BDP03	1	Fixed	770	700	210	250	685	685	12	190	600	594	62	3
MIDI	BDP50	1	Detachable	750	250	150	300	650	230	12	130	550	144	27	3
MIDI	BDP60	1	Detachable	850	350	225	300	750	330	12	205	650	244	42	3
MIDI	BDP60/S	1	Detachable	850	350	225	300	750	330	12	205	650	244	42	3
MIDI	BDP70	1	Detachable	950	450	250	300	850	430	12	230	750	344	56	3
MIDI	BDP70/S	1	Detachable	950	450	250	300	850	430	12	230	750	344	56	3
MIDI	BDP80	1	Detachable	1050	550	275	300	950	530	12	255	850	444	70	3
MIDI	BDP80/S	1	Detachable	1050	550	275	300	950	530	12	255	850	444	70	3
MIDI	BDP90	1	Detachable	1150	650	300	300	1050	630	12	280	950	544	87	3
MIDI	BDP100	1	Detachable	1250	800	325	300	1150	780	12	305	1050	694	109	3
MIDI	BDP120	1	Detachable	1250	1000	325	300	1150	980	12	305	1050	894	135	3

*S= stainless-steel

MAXI range: CFP

Single and two door pillars in 3mm or 5mm galvanised steel.

- P Hot dipped galvanised to BS EN ISO 1461 standard; protects against rust and corrosion; extends life of product.
- P Detachable painted root; gives long lasting protection and ease of installation.
- P Pillars are fitted internally with 18mm external grade, fully treated plywood backboard; strong, stable and knot free.
- P 6mm brass earth stud on pillar and door with 500mm earth strap; protects individuals and equipment.
- P Ground level clearly marked for safety and ease of installation.
- P Pillars are supplied with hazard warning labels to BS EN ISO 7010 standard: saves time and cost for installer.
- P Doors seals designed to IP55; protects against dust and water spray.
- P CLL anti-vandal locks fitted for added security and peace of mind.
- P Recessed doors provide improved anti-vandal properties.
- P Cast stainless-steel block hinges; strong and resist rust and corrosion.
- P Accepts CEL *ENDURE* stainless-steel distribution boards.
- P Larger pillars fitted with lifting eyes.
- P 5mm pillars come fitted with integral, cast stainless-steel door stays.

MAXI pillar options

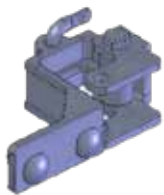
- Powder coated finish to RAL or BS colours, Heritage style, anti-graffiti and G2A specification for highway works.
- Construction in stainless-steel casing - 3mm grade 304.
- Hasp & staple and Yale lock for added security.
- Louvres panel each side, for ventilation.
- Cable exit trays.
- Document holder.



CFP single door, powder coated.



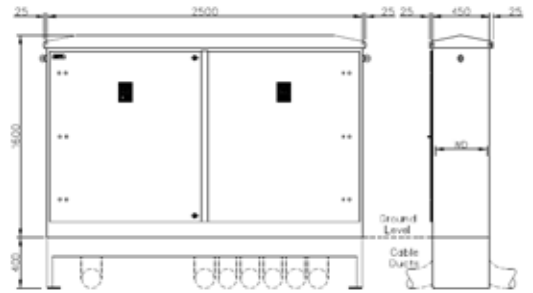
CFP double door, Heritage style



CFP 5mm pillars are fitted with integral door stay.



CFP320



CFP590

Range: sizes in mm	Model ref	Doors	Root	H	W	D	Root H	Back-board H	Back-board W	Back-board D	Working depth	Door aperture H	Door aperture W	Weight approx Kg	Shell thickness
MAXI	CFP320	1	Detachable	1350	800	350	400	1170	780	18	300	1050	695	122	3
MAXI	CFP350	2	Detachable	1350	1200	450	400	1170	1180	18	400	1050	1095	178	3
MAXI	CFP510	1	Detachable	1350	600	450	400	1170	580	18	410	1050	520	155	5
MAXI	CFP520	1	Detachable	1350	800	450	400	1170	780	18	410	1050	720	158	5
MAXI	CFP540	1	Detachable	1350	1000	450	400	1170	980	18	410	1050	920	207	5
MAXI	CFP550	2	Detachable	1350	1200	450	400	1170	1180	18	410	1050	1120	243	5
MAXI	CFP572	2	Detachable	1600	1500	450	400	1420	1480	18	410	1300	1420	314	5
MAXI	CFP580	2	Detachable	1600	2000	450	400	1420	1980	18	410	1300	1920	388	5
MAXI	CFP590	2	Detachable	1600	2500	450	400	1420	2480	18	410	1300	2420	477	5

*S= stainless-steel

MEGA range: DFP

Two and three door pillars in powder coated 3mm 3CR12 stainless-steel.

Designed to meet the demand for larger, taller pillars, in particular those used in the EV supply industry, Charles Endirect launched the new Mega range in 2023.

These pillars are constructed in 3CR12 stainless-steel which is lighter than the standard galvanised steel, but the innovative design ensures strength, allowing for a greater size range. **Pillars are supplied powder coated** to the client's specification as standard. We also offer the option to produce cabinets in 316 grade stainless-steel.

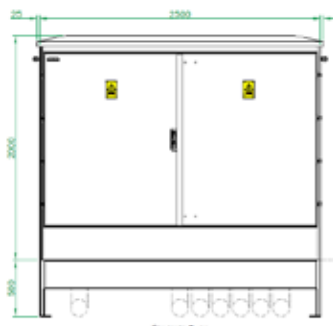
- P Detachable painted roof; gives long lasting protection and ease of installation.
- P Pillars are fitted internally with 18mm external grade, fully treated plywood backboard; strong, stable and knot free.
- P 6mm brass earth stud on pillar and door with 500mm earth strap; protects individuals and equipment.
- P Ground level clearly marked for safety and ease of installation.
- P Pillars are supplied with hazard warning labels to BS EN ISO 7010 standard: saves time and cost for installer.
- P Doors seals designed to IP55; protects against dust and water spray.
- P Flush mounted recessed pull handle, multipoint lock with euro cylinder key lock and padlock hasp on master doors with shoot bolts on slave doors.
- P Cast stainless-steel block hinges offer strength and rigidity.
- P Accepts CEL **ENDURE** stainless-steel distribution boards.
- P Pre-fitted lifting eyes where needed for ease of transport and installation.
- P Flush fitting doors.
- P

MEGA pillar options

- Construction in 316 stainless-steel brushed finish.
- Louvre panels each side.
- Cable exit trays.
- Document holder.



DFP2016



DFP2025



DFP2236

Range: sizes in mm	Model ref	Doors	H	W	D	Root H	O/A H	Back-board H	Back-board W	Back-board D	Working depth	Door aperture H	Door aperture W	Weight approx Kg	Shell thickness
MEGA	DFP2016	2	2000	1600	500	500	2500	1800	1580	18	425	1500	1490	330	3
MEGA	DFP2020	2	2000	2000	500	500	2500	1800	1980	18	425	1500	1894	395	3
MEGA	DFP2025	2	2000	2500	500	500	2500	1800	2480	18	425	1500	2390	460	3
MEGA	DFP2225	2	2200	2500	500	500	2700	2000	2480	18	425	1700	2390	495	3
MEGA	DFP2030	3	2000	3000	500	500	2500	LH 1800 RH 1800	LH 1028 RH 1940	18	425	LH 1500 RH 1500	LH 932 RH 1847	580	3
MEGA	DFP2230	3	2200	3000	500	500	2700	LH 2000 RH 2000	LH 1028 RH 1940	18	425	LH 1700 RH 1700	LH 932 RH 1847	625	3
MEGA	DFP2036	3	2000	3600	500	500	2500	LH 1500 RH 1800	LH 1028 RH 2540	18	425	LH 1500 RH 1500	LH 932 RH 2445	690	3
MEGA	DFP2236	3	2200	3600	500	500	2700	LH 2000 RH 2000	LH 1028 RH 2540	18	425	LH 1700 RH 1700	LH 932 RH 2445	740	3

Market Trader range: Barbican, Smithfield

Two door pillars in 3mm galvanised steel.

As the title suggests, our market trader pillars are ideal for installation at weekly market sites or in any other situation that requires temporary electrical supply. The standard pillars have been designed with two independently locking doors for separate supplier and user connections. Pillars can be finished to the client's specification, including preferred locks and paint finishes, and constructed in stainless steel.

- P Hot dipped galvanised shell to BS EN ISO 1461 standard; protects against rust and corrosion; extends life of product.
- P Pillars are supplied with hazard warning labels to BS EN ISO 7010 standard: saves time and cost for installer.
- P 6mm brass earth stud on pillar and door with 500mm earth strap; protects individuals and equipment.
- P Ground level is clearly marked for ease of installation.
- P Doors seals designed to IP55; protects against dust and water spray.
- P Locks to client's specification.
- P Space for DNO supply.
- P The Barbican can be supplied empty or pre-wired with up to four 230V sockets, RCBO protected.
- P The Smithfield can be supplied empty or pre-wired with up to six 230V sockets, RCBO protected or to customer's specifications.

Market Trader pillar options

- Powder coated finish available to RAL or BS colours, anti-graffiti and G2A specification for highway works.
- Construction in stainless-steel casing - 3mm grade 304.



Barbican



Smithfield



Range: sizes in mm	Model ref	Doors	H	W	D	Root H	O/A H	Back-board H	Back-board W	Back-board D	Working depth	Door aperture H	Door aperture W	Weight approx Kg	Shell thickness
Market trader	Smithfield	2	1250	800	325	300	1550	1150	782	12	295	T 530 B 530	T 729 B 729	115	3
Market trader	Barbican	2	1056	376	326	300	1356	T 598 B 350	T 250 B 250	12	280	T 529 B 250	T 256 B 256	135	3

GRP pillars

With a design life of 30 years, the GRP pillars offer a low maintenance, flexible solution and are ideal for housing electrical equipment. GRP pillars also offer an excellent size to weight ratio so are a good choice if a larger pillar type is required.

- P Single or double door units.
- P 18mm external grade backboard.
- P Stainless-steel hinges.
- P Yale type locks.
- P Internal fixing down flange to allow for bolting down to a concrete base.
- P Standard smooth gelcoat finish, available in green (BS 14-C-39) or grey (BS 10-A-05)
- P Other colours available on request.
- P Can be pre-wired to your specification.
- P Bespoke GRP pillars also available.



GRP Single door



GRP Double door



Range: sizes in mm	Model ref	Doors	Root	H	W	D	Root H	Back-board H	Back-board W	Back-board D	Working depth
GRP	GRP1	1	n/a	660	470	315	n/a	510	410	18	230
GRP	GRP2	1	n/a	730	590	410	n/a	500	500	18	310
GRP	GRP3	1	n/a	1205	660	400	n/a	970	580	18	290
GRP	GRP4	1	n/a	1100	750	400	n/a	890	580	18	290
GRP	GRP5	2	n/a	1230	910	450	n/a	1020	760	18	360
GRP	GRP6	2	n/a	1325	1095	475	n/a	1070	920	18	350
GRP	GRP7	2	n/a	1325	1095	680	n/a	1070	920	18	570
GRP	GRP8	2	n/a	1275	1310	400	n/a	1170	920	18	290
GRP	GRP9	2	n/a	1475	1455	700	n/a	1220	1220	18	590
GRP	GRP10	2	n/a	1615	1710	800	n/a	1220	1530	18	660
GRP	GRP11	2	n/a	1605	2000	500	n/a	1220	1780	18	410
GRP	GRP12	2	n/a	1600	2000	810	n/a	1220	1780	18	650
GRP	GRP13	2	n/a	2000	2000	500	n/a	1220	1880	18	320
GRP	GRP14	2	n/a	2000	2000	1000	n/a	1220	1880	18	820
GRP	GRP15	2	n/a	2000	2000	1500	n/a	1220	1880	18	1390
GRP	GRP16	2	n/a	2000	2000	2000	n/a	1220	1880	18	1890

*S= stainless-steel

Bespoke pillars

We can design and build bespoke pillars to meet your particular needs. Whether you require one of our standard pillars in a specific material such as grade 316 stainless-steel, or a unit designed to fit into a particular space, we can produce a pillar to meet the specification required.

For more information, please contact our Customer Service Team or your CEL Area Sales Manager.



Bespoke, pillar in marine grade 316 stainless steel situated at a ferry port.



Bespoke, low-profile pillar designed to sit beneath wall height.



CFP572 pillars in grade 316 stainless-steel for an overseas client.



Bespoke, slimline pillar supplying EV Charges.



Olympic Park double fronted pillar



Bespoke entry pillar with keypad for Chelsea Wharf development

Locks and Security Options

CLL anti-vandal locks

- P Fitted as standard in our Maxi range, Midi BDP03 and Midi BDP/FP2 models.
- P Option to replace Tri head locks with CLL locks in other Midi pillar models.
- P Manufactured from precision die cast components.
- P Lock inset precision CNC machined using 316 grade stainless-steel.
- P Replacement key and cap available.



CLL anti-vandal lock, cap, and key

Tri-head lock and key

- P Fitted to our Mini and Midi ranges.
- P Replacement key available.



Tri-head lock and key

Yale Lock

- P Option to fit to Midi and Maxi pillars for added security.

Crown Lock

- P Option to fit to Mini and Midi pillars for added security.

Hex Locks

- P Can be fitted in place of standard tri-head locks.



Yale lock

Hasp and Staple

- P Integral hasp in the Mega range.
- P Option to fit to Midi and Maxi pillars to allow use of padlock.



Hex lock

Bespoke Security Features

We can also offer bespoke security options such as keypad entry, please contact us for more information.



Bespoke pillar with keypad security



Hasp and staple

Accessories and Optional Extras

Louvre panels

- P Mini and Midi ranges available with front louvres.
- P Maxi and Mega ranges available with side louvres.
- P Allows for ventilation to reduce condensation.

Cable exit trays

- P For controlled access to sockets or other internal connectors.
- P Secure once door is locked.

Cable protectors

We recommend that suitable cable protectors are used when temporary supply cables are in place. We offer a number of types, please contact us for details.

Document holders

Available in our **Midi**, **Maxi** and **Mega** ranges or in a bespoke pillar, subject to space inside.

- P Used to hold any relevant documents, such as the Technical Document Pack making them easily available for the contractor.



Side louvre panels



Document holders.



Cable Exit Tray



Cable protectors

Pre-wired Distribution Pillars

Our dedicated in-house design team consists of fully qualified and experienced electrical and mechanical engineers; this means we can offer an unparalleled service, both in terms of the design, and the technical submission.

When a request for quotation is received, our team provide a detailed offer including a drawing, illustrating the external and internal specifications for your approval. We work with you from start to finish to ensure the product meets your needs.

Our pillars are pre-wired and tested at our factory in Wincanton, Somerset, enabling us to have full quality control through the entire process, this means you receive a pillar that is fully tested and ready for installation.

Advantages for you:

- A full technical support and design service provided by qualified and experienced personnel.
- All design work, fabrication and assembly undertaken in one place ensuring full quality control.
- A team experienced in designing with a variety of OEM equipment.
- Parametric 3D modelling and AutoCAD software enables state of the art design processes.
- A range of distribution boards are available in polycarbonate IP65, steel and grade 304 stainless-steel.
- A wide variety of control and protection options to meet customers specifications.
- All pre-wired units are tested and certified to BS EN 61439-1 standard before they leave the factory.
- Light, heater, thermostat and 13A RCD socket can be factory fitted.

Technical Document pack:

Each pre-wired pillar comes with a full technical document pack containing:

- P Manufacturer information.
- P Installation guide.
- P Technical information, standards, electrical and service conditions.
- P Declaration of Conformity.
- P UKCA and CE marking.
- P Parts list with Charles Endirect stock codes.
- P Data sheets and manuals.
- P Drawings and electrical schematics.

Full traceability:

- P ID number.
- P Standard.
- P Rated operational voltage U_e .
- P Rated Insulation voltage U_i .
- P Degree of protection.
- P Date of manufacture.

For more information, contact your CEL Area Sales Manager or our Technical Team.



BSkyB



Olympic Park



Stockton High Street



Full Technical Document pack containing:

- o Manufacture information.
- o Installation guide.
- o Technical information, standards, electrical and service conditions.
- o EU Declaration of Conformity.
- o CE marking.
- o Parts list with Charles Endirect stock codes.
- o Data sheets and manuals.
- o Drawings and electrical schematics.

The image displays a collection of technical documents from Charles Endirect, overlaid to show various components of a product pack. The documents include:

- INFORMATION**: A table listing roles such as Design Engineer, Fabrication engineer 1 & 2, and Assembly manufacturer by.
- INSTALLATION GUIDE**: Sections for General (product handling), Warning (grounding and safety), and Check arrangements.
- TECHNICAL INFORMATION**: A list of components including Cable, Switchgear, and Control gear.
- TEST CERTIFICATE**: A document certifying compliance with BS EN 61439-2 for low voltage switchgear and controlgear assemblies.
- TEST REPORT - ROUTINE VERIFICATION TESTING**: A table showing test results for various sections.
- EU DECLARATION OF CONFORMITY**: A formal statement of compliance with CE marking requirements, listing standards like EN 61439-2 and EN 61439-1.

Each document features the Charles Endirect logo and the text 'DOCUMENT PACK: 011822A'. A large 'SAMPLE DOCUMENT' watermark is visible across the center of the collage.

For more information, visit our website: www.charlesendirect.com

Distribution for EV Charging

Charles Endirect have worked with several key companies in the EV market, and this, combined with a proven track record of innovation and high-quality design and manufacturing in the street lighting and transport sectors, means CEL are perfectly placed to provide reliable and secure power distribution and connections for any EV charging system.

The MEGA pillar range launched in 2023 has been designed to meet the need for larger, taller feeder pillars, in particular those used in the EV supply industry. All our pillars can be pre-wired to meet the needs of your specific project and we can work with charger manufacturers to provide complete systems or create supplies for your chosen charger.

Advantages for you:

- A full technical support and design service provided by qualified and experienced personnel.
- All design work, fabrication and assembly undertaken in one place ensuring full quality control.
- A team experienced in designing with a variety of OEM equipment.
- Parametric 3D modelling and AutoCAD software enables state of the art design processes.
- A range of distribution boards are available in polycarbonate IP65, steel and grade 304 stainless-steel.
- A wide variety of control and protection options to meet customers specifications.
- All pre-wired units are tested and certified to BS EN 61439-1 standard.
- Light, heater, thermostat and 13A RCD socket can be factory fitted.
- A fully pre-wired and tested pillar delivered to site ready for installation.
- Time and cost savings for contractor and client.

Technical Document pack:

Each pre-wired pillar comes with a full technical document pack containing:

- P Manufacturer information.
- P Installation guide.
- P Technical information, standards, electrical and service conditions.
- P Declaration of Conformity.
- P UKCA and CE marking.
- P Parts list with Charles Endirect stock codes.
- P Data sheets and manuals.
- P Drawings and electrical schematics.

Full traceability:

- P ID number.
- P Standard.
- P Rated operational voltage U_e .
- P Rated Insulation voltage U_i .
- P Degree of protection.
- P Date of manufacture.



EV Distribution Pillar for Highways England supporting standard and rapid charging.



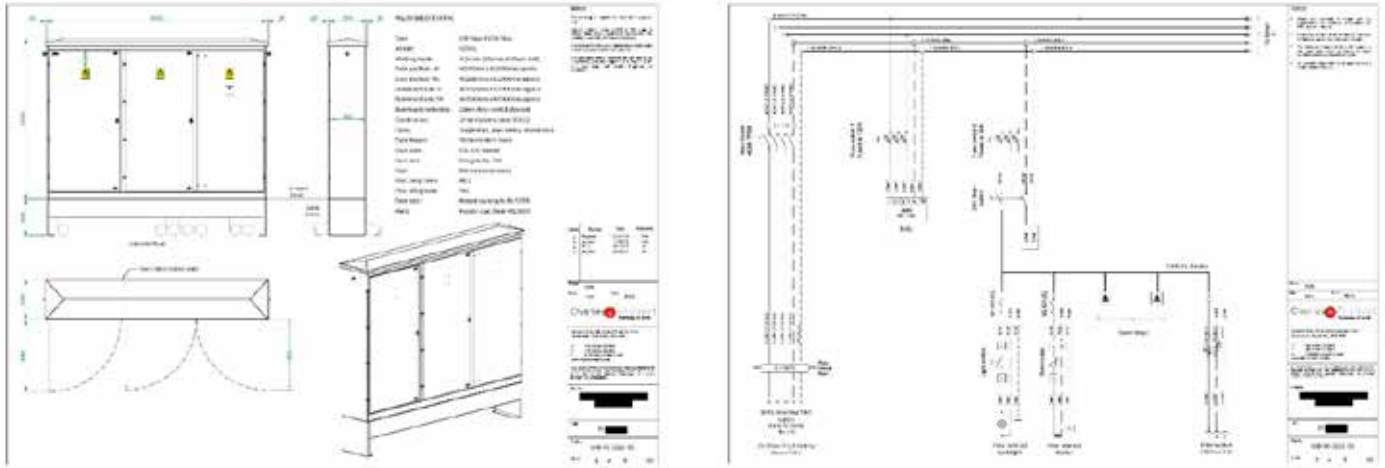
The brief for this project was for the pillar to be as streamline as possible to fit into the limited space available, but still have the capacity to contain all the required connections.



Another design for Highways England, this pillar provides all the power distribution needed for the charge point.

Below shows part of a series of 15 no. CAD drawings for a large distribution pillar designed for EV charging. This project was for Bristol City Council to feed:

- 9 rail mounted double fast charge points
- 2 wall-mounted double fast charge points and
- 2 rapid charge points.



Below, the pillar being delivered to site and positioned, prior to installation.



For more information about our Feeder Pillars and the other products and services we offer, visit our website:

www.charlesendirect.com

or scan the QR code below.



Size Chart for CEL Standard feeder pillars – 2023 on

Range: sizes in mm	Model ref	Doors	H	W	D	Root H	O/A H	Back-board H	Back-board W	Back-board D	Working depth	Door aperture H	Door aperture W	Weight approx Kg	Shell thickness
MINI	SMP30	1	700	160	150	300	1000	600	150	12	130	580	142	16	3
MINI	SMP40	1	700	210	150	300	1000	600	200	12	130	580	192	18	3
MINI	SMP40/S	1	700	210	150	300	1000	600	200	12	130	580	192	18	3
MINI	SMP60	1	950	360	150	300	1250	800	350	12	130	780	342	34	3
MINI	FMP15	1	460	300	150	150	610	290	285	12	130	280	285	16	3
MINI	FMP30	1	700	160	125	300	1000	600	145	12	130	570	150	17	3
MINI	RMP30	1	680	285	160	320	1000	550	235	12	118	550	222	28	3
MINI	RMP40	1	673	400	225	360	1033	545	335	12	183	545	335	40	3
MIDI	BDP/FP2	1	710	450	250	300	1010	590	430	12	230	490	345	44	3
MIDI	BDP03	1	770	700	210	250	1020	685	685	12	190	600	594	62	3
MIDI	BDP50	1	750	250	150	300	1050	650	230	12	130	550	144	27	3
MIDI	BDP60	1	850	350	225	300	1150	750	330	12	205	650	244	42	3
MIDI	BDP60/S	1	850	350	225	300	1150	750	330	12	205	650	244	42	3
MIDI	BDP70	1	950	450	250	300	1250	850	430	12	230	750	344	56	3
MIDI	BDP70/S	1	950	450	250	300	1250	850	430	12	230	750	344	56	3
MIDI	BDP80	1	1050	550	275	300	1350	950	530	12	255	850	444	70	3
MIDI	BDP80/S	1	1050	550	275	300	1350	950	530	12	255	850	444	70	3
MIDI	BDP90	1	1150	650	300	300	1450	1050	630	12	280	950	544	87	3
MIDI	BDP100	1	1250	800	325	300	1550	1150	780	12	305	1050	694	109	3
MIDI	BDP120	1	1250	1000	325	300	1550	1150	980	12	305	1050	894	135	3
MAXI	CFP320	1	1350	800	350	400	1750	1170	780	18	300	1050	695	122	3
MAXI	CFP350	2	1350	1200	450	400	1750	1170	1180	18	400	1050	1095	178	3
MAXI	CFP510	1	1350	600	450	400	1750	1170	580	18	410	1050	520	155	5
MAXI	CFP520	1	1350	800	450	400	1750	1170	780	18	410	1050	720	158	5
MAXI	CFP540	1	1350	1000	450	400	1750	1170	980	18	410	1050	920	207	5
MAXI	CFP550	2	1350	1200	450	400	1750	1170	1180	18	410	1050	1120	243	5
MAXI	CFP572	2	1600	1500	450	400	2000	1420	1480	18	410	1300	1420	314	5
MAXI	CFP580	2	1600	2000	450	400	2000	1420	1980	18	410	1300	1920	388	5
MAXI	CFP590	2	1600	2500	450	400	2000	1420	2480	18	410	1300	2420	477	5
MEGA	DFP2016	2	2000	1600	500	500	2500	1800	1580	18	425	1500	1490	330	3
MEGA	DFP2020	2	2000	2000	500	500	2500	1800	1980	18	425	1500	1894	395	3
MEGA	DFP2025	2	2000	2500	500	500	2500	1800	2480	18	425	1500	2390	460	3
MEGA	DFP2225	2	2200	2500	500	500	2700	2000	2480	18	425	1700	2390	495	3
MEGA	DFP2030	3	2000	3000	500	500	2500	LH 1800 RH 1800	LH 1028 RH 1940	18	425	LH 1500 RH 1500	LH 932 RH 1847	580	3
MEGA	DFP2230	3	2200	3000	500	500	2700	LH 2000 RH 2000	LH 1028 RH 1940	18	425	LH 1700 RH 1700	LH 932 RH 1847	625	3
MEGA	DFP2036	3	2000	3600	500	500	2500	LH 1500 RH 1800	LH 1028 RH 2540	18	425	LH 1500 RH 1500	LH 932 RH 2445	690	3
MEGA	DFP2236	3	2200	3600	500	500	2700	LH 2000 RH 2000	LH 1028 RH 2540	18	425	LH 1700 RH 1700	LH 932 RH 2445	740	3
Market trader	Smithfield	2	1250	800	325	300	1550	1150	782	12	295	T 530 B 530	T 729 B 729	115	3
Market trader	Barbican	2	1056	376	326	300	1356	T 598 B 350	T 250 B 250	12	280	T 529 B 250	T 256 B 256	135	3

*S= stainless-steel



www.charlesendirect.com
sales@charlesendirect.com
01963 828400