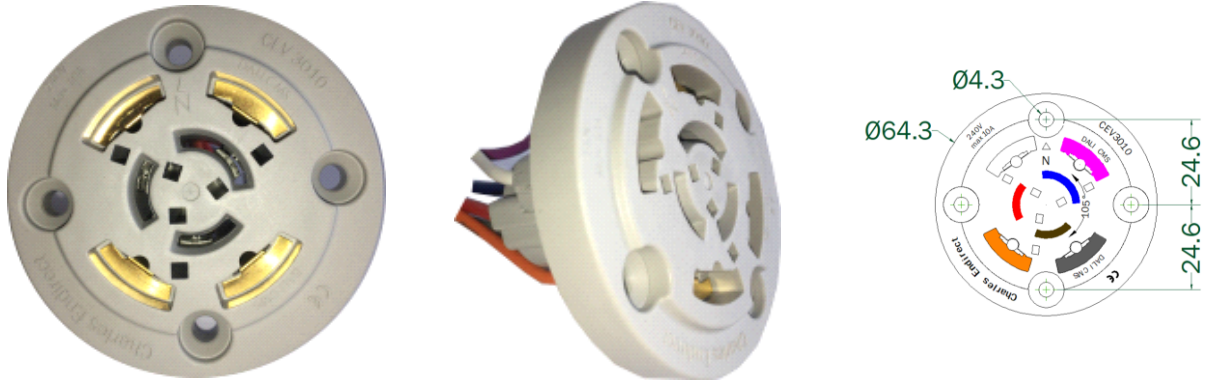


PRODUCT DATASHEET

StockCode:	CEV3010	Date:	08/02/2022
Description:	Nema Socket 7 Pin	Rev:	2
Product Group:	CEV	Status:	Current
Doc Ref:	PDS-0006-02		



Electrical:

Rated operational voltage (Ue)	240V ac
Rated frequency (fn)	50/60Hz
Rated current (InA)	10A
Rated insulation voltage (Ui)	500V ac

Mechanical:

Housing	Nylon PA66 UV Protected
Power contacts	Phosphor Copper, Nickel/Tin Plating
Dimming contacts	Beryllium Copper, Gold Plating
IP codes	IP2X / IP65 (with compatible IP rated device fitted)
Impact	IK09
External Dimensions	W 48mm x H 30mm x D48mm
Weight	30g

Normal Service Conditions:

Ambient air temperature for operation	-25 °C to 55 °C
Altitude	< 2000m
Humidity	95 % @ 55 °C
Pollution degree	3

Pre-wired Cable:

Live	0.75mm ² Brown
Neutral	0.75mm ² Blue
Load	0.75mm ² Red
Control signal pin 4 (note 1)	0.5mm ² Violet
Control signal pin 5 (note 1)	0.5mm ² Grey
Control signal pin 6 (note 1)	0.5mm ² Orange

Note: we reserve the right to change the above information without prior notice.
 Wessex Way, Wincanton Business Park, Wincanton, Somerset, BA9 9RR Company Reg No. 1855059, England
 T +44 (0) 1963 828400 F +44 (0) 1963 828401 E info@charlesendirect.com www.charlesendirect.com

PRODUCT DATASHEET

Control signal pin 7 (note 1)	0.5mm ² White
Wire standard	BS 6231
Wire lengths	500mm

Fitting:

Hole cutout diameter	min 36mm, max 38mm
Clearance depth inside the luminaire cover	min 38mm

Standards:

BS 5972	
ANSI C136.41	
BS EN 60598-1	
BS EN 62321-3	

UK Regulations

Electrical Equipment (Safety) Regulations 2016	No. 1011
Electromagnetic Compatibility Regulations 2016	NO. 1091
The Restriction of the Use of Certain Hazardous Substances - in Electrical & Electronic Equipment Regulations 2012	No. 3032

EU Directives:

LVD 2014/35/EU	
EMC 2014/30/EU	
RoHS 2011/65/EU	

Quality Assurance:

ISO 9001	
ISO 14001	
ISO 45001	

Other Related Documents:

EU Declaration of Conformity	
UK Declaration of Conformity	
Hole cutting template 1:1	

Notes:

Note 1, connections will depend on the NEMA device being fitted and control product (electronic ballast) being used. Check manufactures product information.